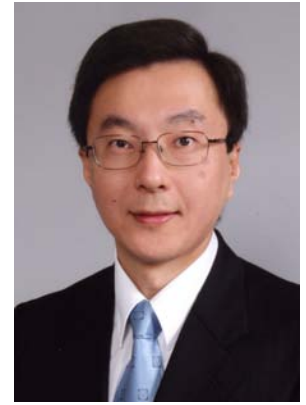


## 1 Overview

### 1) Principles and Goals

Seichi Horie, MD, MPH, PhD

Director, Institute of Industrial Ecological Sciences



Occupational Medicine is a multidisciplinary science based on medicine, engineering, behavioral sciences, psychology, and many other fields of study. Ideally, it is applied at the workplace to reduce adverse health effects attributable to working environments and working conditions, to facilitate adaptation of work to worker, and to promote workers' health and safer, more effective working environments.

Industrial Ecological Science is a unique term adopted by this institute with the goal of establishing a new science that targets the health and well-being of workers in ever-changing industrialized societies, based on the application of occupational medicine concepts to groups and organizations.

The Institute of Industrial Ecological Sciences (IIES) promotes research, education, and international partnership in the field of occupational medicine, promoting innovative research across a wide range of occupational and environmental issues, ranging from basic research to applied technologies and to practical guidelines for real-world worksites. The IIES pursues cutting-edge, world-class research through joint efforts with UOEH alumni; it also promotes research to resolve concrete issues through partnerships involving researchers from diverse backgrounds and specialties, based on an understanding of social systems and conditions at real-world workplaces.

The IIES offers young physicians a balance of educational excellence and real-world experience in occupational medicine to produce leading occupational physicians who have mastered a scientific approach to solving the issues they confront in their sphere of activities and who base their practice on an in-depth understanding of occupational medicine.

The IIES promotes joint research, international partnerships, and human resource development in the field of occupational medicine, seeking to diffuse knowledge and understanding of occupational medicine worldwide, especially in Asia, through the exchange of experts, scholars, and research scientists and through remote education systems that transmit and receive visual images and data through high-speed data connections.

### 2) Historical Profile

The departments of Environmental Health Engineering and Ergonomics were established in 1978, when the University of Occupational and Environmental Health, Japan (UOEH) was founded to promote occupational medicine and to train occupational physicians.

In 1984, when UOEH graduated its first class, the Graduate School of Medical Science was established jointly by the departments of Clinical Epidemiology, Environmental Epidemiology, Environmental Toxicology, and Systems Physiology. The Fundamental Course on Occupational Medicine was launched at this time.

The Institute of Industrial Ecological Sciences (IIES) was established in 1986 through the combined efforts of the six departments named above to pursue advanced research and post-graduate education in the field of occupational medicine.

In 1987, the IIES added the Department of Health Policy and Management.

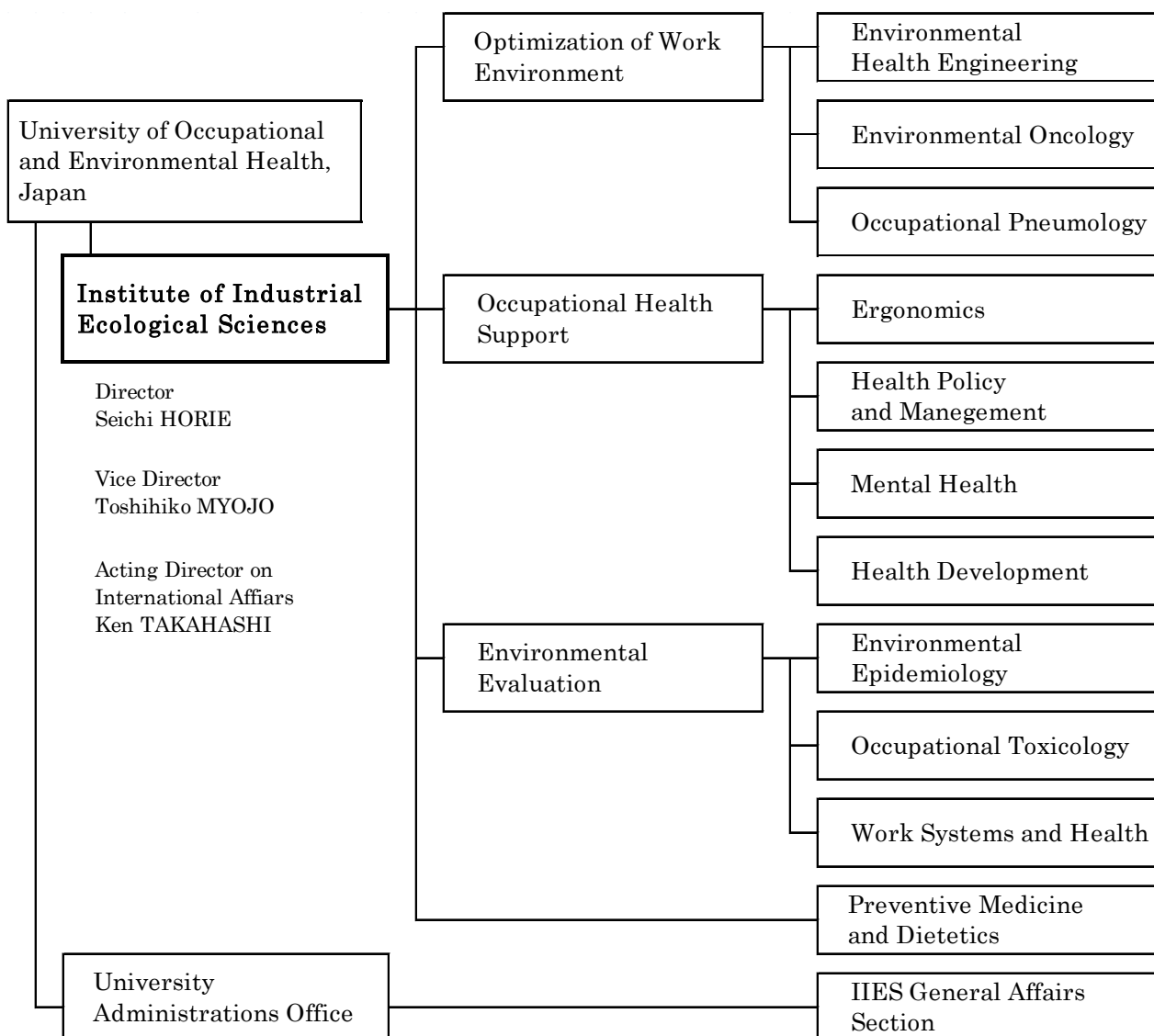
From 1991 to 1994, the departments of Occupational Health Economics, Health Development, Mental Health, Work Systems and Health, Occupational Oncology, and Occupational Pneumology were added to enhance the multidisciplinary capacity of the IIES.

In 2004, as part of a movement to downsize the institute, the departments of Clinical Epidemiology, Systems Physiology, and Occupational Health Economics were closed.

In 2009, to promote large-scale research projects, ten departments were integrated into the three following clusters: Optimization of Work Environment, Occupational Health Support, and Environmental Evaluation.

The IIES has assumed responsibility for the Residency Program for Occupational Health Physicians (the A Course), handling occupational medicine education at the School of Medicine, the School of Health Sciences, and the Occupational Health Training Center. The IIES takes pride in its designation as a WHO Collaborating Center (WHOCC) since 1988 and has hosted international Group Training Courses on behalf of the Japan International Cooperation Agency (JICA) since 1985. The IIES has also exchanged Memorandums of Understanding with institutes in Korea, China, Taiwan, Vietnam, and Finland to promote international partnerships. The IIES currently implements a wide range of research, with an emphasis on nanoparticles, asbestos, and issues related to the aging workforce. It is well-prepared for the opening of the Graduate School for Occupational Medicine scheduled for 2012.

### 3) Organization



#### 4) Staff

##### Professor

Toshihiko MYOJO	Environmental HealthEngineering
Hiroshi KASAI	Environmental Oncology
Yasuo MORIMOTO	Occupational Pneumology
Masaharu KUMASHIRO	Ergonomics
Seichi HORIE	Health Policy and Management
Hisanori HIRO	Mental Health
Hiroshi YAMATO	Health Development
Ken TAKAHASHI	Environmental Epidemiology
Toshiaki HIGASHI	Work Systems and Health

##### Associate Professor

Kazuaki KAWAI	Environmental Oncology
Akira OHGAMI	Occupational Pneumology
Hiroyuki IZUMI	Ergonomics
Jinro INOUE	Health Policy and Management
Eun-Kee PARK	Environmental Epidemiology
Reiko IDE	Work Systems and Health
Noritaka TOKUI	Preventive Medicine and Dietetics

##### Assistant Professor

Masanori OHTA	Health Development
Takako OYABU	Environmental Health Engineering

##### Research Assistant

Yunsan LI	Environmental Oncology
Yoshiyuki HIGUCHI	Ergonomics
Shoko KAWANAMI	Health Policy and Management
Kosuke MAFUNE	Mental Health
Yasumasa EGUCHI	Health Development
Delgermaa VANYA	Environmental Epidemiology
Donald John WILSON	Occupational Toxicology

##### Clerical Staff

Toshiro KAMADA	IIES General Affairs Section
Taketoshi FUKUHARA	IIES General Affairs Section
Atsuko KOMATSUBARA	IIES General Affairs Section
Sayumi YAMAZAKI	Environmental Health Engineering
Masami HIROHASHI	Occupational Pneumology
Mihoko MATSUNAMI	Ergonomics
Rie IWAO	Health Policy and Management
Sachiko MIZUKAMI	Mental Health
Sachiyo OMAE	Health Development
Erika NINOMIYA	Work Systems and Health