

The 33rd Japan-China-Korea Conference on Occupational Health and Safety

Final circular (version March 20, 2026)

The Japan-China-Korea Conference on Occupational Health and Safety has long served as a platform for academic exchange and collaboration among researchers dedicated to improving occupational health in East Asia. Since its establishment, the conference has fostered dialogue, shared experiences, and promoted mutual understanding among participants from Japan, China, and Korea.

The 33rd conference will be held in Kochi, Japan, in 2026. We warmly invite you to join us in this historic city, where we look forward to active discussions, fruitful academic exchange, and the opportunity to strengthen our professional ties and friendships.

1. SCHEDULE

June 24, 2026 (Wed) ~ June 26, 2026 (Fri)

2. VENUE & HOTEL ACCOMMODATION

Kochi, Japan

Convention venue: The Crown Palais New Hankyu Kochi

*The name of hotel will be revised to ANA Crowne Plaza Hotel Kochi in early 2026.

(4-2-50 Honmachi, Kochi-shi, Kochi, 780-8561)

+81-88-873-1111

<https://hmihotelgroup.com/crownpalais-kochi/en/restaurant/index.php>

3. THEME

New Scope and Implementation of Advanced Technology in Occupational Health

4. PROGRAM PLAN

Day 1 / Wednesday, June 24, 2026

Time	Room 1	Room 2	Room 3
14:00-15:30	Registration	Poster Exhibition	/
15:30-16:50	Workshop		
16:50-17:00	<i>Break</i>		
17:00-18:30	/	Oral Poster Session 1	

Day 2 / Thursday, June 25, 2026

Time	Room 1	Room 2	Room 3	Room 4	Room 5
08:30-09:00	/	Poster Exhibition	/	/	/
09:00-09:20	Opening Ceremony				
09:20-10:50	Keynotes 1				
10:50-11:00	<i>Break</i>				
11:00-12:30	/	Oral Poster Session 2			
12:30-14:00	Lunch			Committee Meeting	
14:00-15:40	Symposium 1	/	Oral Session 1	/	/
15:40-16:00	<i>Break</i>		<i>Break</i>		
16:00-17:40	Symposium 2		Oral Session 2		
17:40-18:00	<i>Break</i>		<i>Break</i>		
18:00-20:00	/		/		

Day 3 / Friday, June 26, 2026

Time	Room 1	Room 2	Room 3
08:30-10:00	Symposium 3	/	Oral Session 3
10:00-10:30	<i>Break</i>		/
10:30-12:00	Keynotes 2		
12:00-12:30	Closing Ceremony		/

5. PRESENTATION STYLE

Presentation Sessions

- Oral Session
- Oral Poster Session

***Please note that we may not be able to guarantee your preferred presentation format, and due to venue capacity and program constraints, we may not be able to accept all submitted abstracts.**

Program Sessions

- Keynotes
- Workshop
- Symposium
- Special Keynote

6. PRESENTATION GUIDELINE

- After receiving the announcement regarding presentation file submission, which will be sent later, please submit your presentation file prior to the start of the conference.

Oral Session (Including Program Sessions)

- In general, the duration is fixed at 10-15 minutes/talk including QA, discussion time and switching time. *Except for Program Sessions.
- In principle, oral session should be given using PowerPoint or other slides prepared by the presenters.

Oral Poster Session

- In general, the duration is fixed at 3-4 minutes/talk.
- Posters cannot exceed 900 mm in width or 1500 mm in height.
- There will be no poster printing service available at the venue. Please print your poster at your institution and bring it with you to the venue.

7. OFFICIAL LANGUAGE

English

8. PARTICIPATION FEES

Online payment (tax included)

200 USD or 28,000 JPY

Onsite payment (tax included)

200 USD

- For online payment, the participation fee can be paid by credit card using the payment link provided in the following form.
- For onsite payment, the participation fee can be paid by cash.

9. REGISTRATION

- Please use the following Google Form for abstract submission and participation/accommodation registration.
- If you do not receive a confirmation email after completing any registration via Google Form, please contact the executive secretariat.
- If you are unable to access the Google Form, an Excel form is available as an alternative.
- You may request the Excel form from the contact person in your country and return the completed file to them.

Abstract Submission

Presentation Sessions (Oral Session, Oral Poster Session)

<https://forms.gle/hQkrGZxQsLMYEWNq8>

Program Sessions (Keynotes, Workshop, Symposium, Special Keynote)

<https://forms.gle/N2xSJo5yRJhJkA6B6>

- Please submit your abstract in English only.
- No translation services will be provided.
- The presenting author must be listed first in the author list.

Participation/Accommodation Registration

<https://forms.gle/EciW8C948XH1hbKy9>

***If you select "Online payment," please use the same email address and full name that you entered in the "Participation/Accommodation Registration" Google Form.**

Pay with link

OR

Contact information

Contact details

email@example.com

Full name

Payment method

Card information

1234 1234 1234 1234

MM / YY CVC

Cardholder name

Full name on card

Billing address

Japan

Address

Enter address manually

Same email address and full name[†] as in the Google Form

[†]Kindly enter your name in the format: Last Name, then First Name.
(e.g., Yamada Taro, Sun Wu-kong, Hong Gil-dong)

***Please note that once the participation fee has been paid, it is non-refundable under any circumstances.**

Accommodation Information

- Please indicate in the registration form whether you will arrange your accommodation independently. We strongly recommend making your own hotel reservations via links in the next page, as you may find more economical rates when booking directly.
- If you prefer to request a reservation through the Executive Office, the conference venue hotel offers rooms at the following rates (breakfast included):
 - Single room: 17,600 JPY per night (per person, tax included)
 - Twin room: 26,400 JPY per night (for two persons, tax included)

***To ensure smooth arrangements, participants who require a visa to enter Japan are kindly requested to submit a copy of their official visa by the end of May. Room assignments and social event reservations will be confirmed upon receipt of this document.**

***For reservations at the conference venue hotel, please note the following Cancellation Policy.**

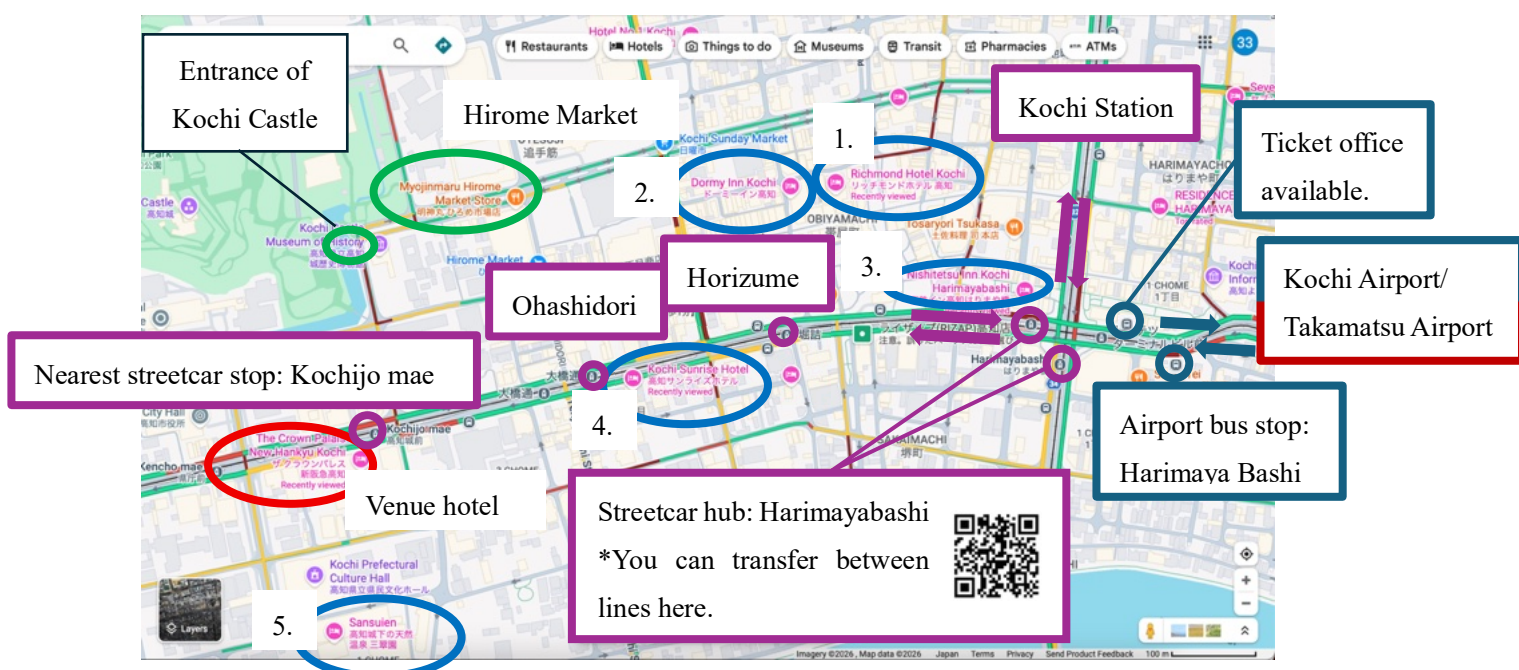
Cancellation Policy for Hotel Accommodation

(Example: Check-in on June 24, 2026)

- 11-20 days before check-in (e.g., June 4–14, 2026): 10%
- 2-10 days before check-in (e.g., June 15–22, 2026): 20%
- 1 day before check-in (e.g., June 23, 2026): 80%
- On the day of check-in (e.g., June 24, 2026): 100%

Hotel Website Links

- Venue hotel: <https://go-hmihotelgroup.reservation.jp/en/hotels/crownpalais-kochi/searchInput>
- 1. Richmond Hotel Kochi (Popular hotel): <https://richmondhotel.jp/kochi/>
- 2. Dormy Inn Kochi (Popular hotel): <https://dormy-hotels.com/dormyinn/hotels/kochi/>
- 3. Nishitetsu Inn Kochi (Popular hotel): <https://inn-kochi.nnr-h.com/>
- 4. Kochi Sunrise Hotel (Local hotel): <https://kochi-sunrise.com/>
- 5. Sansuien (Local Japanese style hotel with hot spring): <https://sansuien.co.jp/>
- Website of reservation (Sansuien):
<https://booking.sansuien.co.jp/booking/result?code=ea24f45a0c6a463d2422395bb7507e0d>



***If you are staying at hotels numbered 1, 2 or 3, the streetcar is a convenient way to reach the venue hotel. Please see the following section for details.**

10. IMPORTANT DATES

- February 1, 2026: Call for Abstracts & Application for Participation/Accommodation
- April 10, 2026: Abstract submission & Application for Participation/Accommodation Deadline

***Please note that if your participation registration is not completed by the deadline, your abstract may not be accepted.**

11. INFORMATION

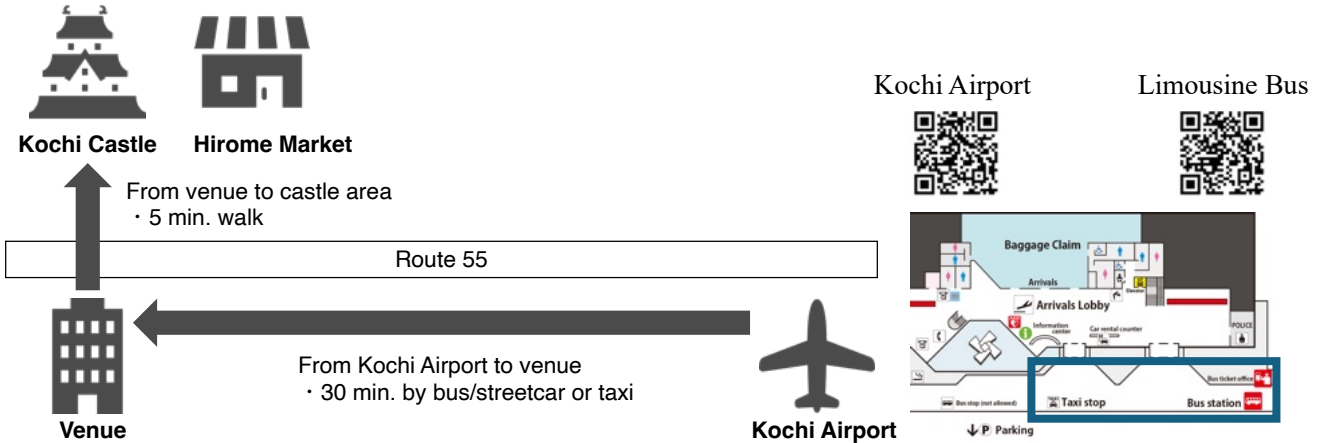
- Free Wi-Fi is available at the conference venue hotel.
- Smoking rooms are available on each floor of the venue.

12. ACCESS TO THE VENUE

To Kochi Airport

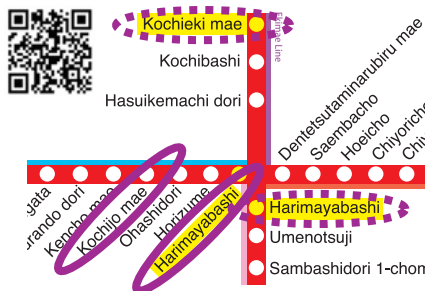


To Venue



***If you are taking the bus (Airport Limousine Bus), get off at Harimaya Bashi stop and transfer to the streetcar, getting off at Kochijo mae stop (Please see the previous map for details.).**

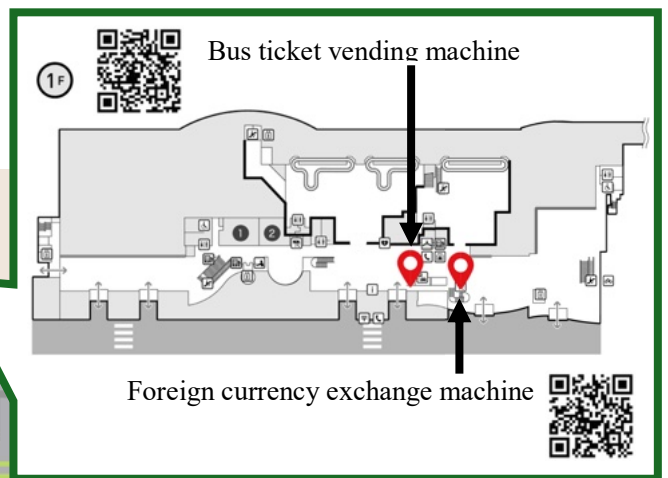
- Kochi Airport: <http://kochiap.co.jp/en/access/>
- Airport Limousine Bus (900 JPY (**cash only**)/one way, 20 min.):
<https://www.tosaden.co.jp/multilingual/en/bus/index.html>
- Streetcar (Streetcar: 230 JPY (**cash only**)/one way, 8 min. Route map is below.):
<https://www.tosaden.co.jp/multilingual/en/electric/index.html>



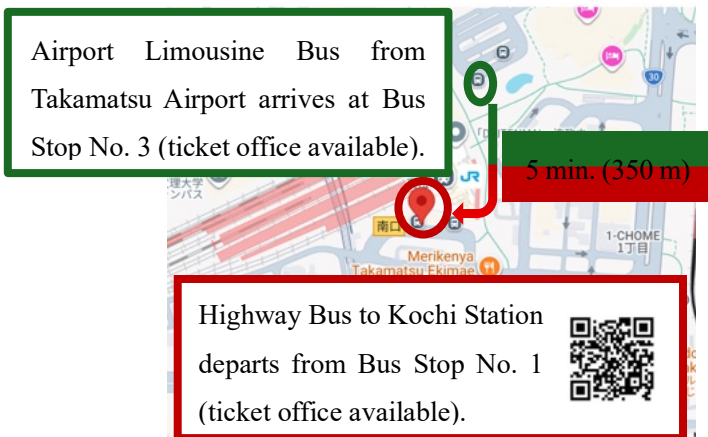
Optional Route (via Takamatsu Airport — more economical but involves multiple transfers)

1. **Limousine bus:** Takamatsu Airport → Takamatsu Station (1000 JPY/one way, 45 min.)
2. **Highway bus:** Takamatsu Station → Kochi Station or Harimayabashi (3900 JPY/one way, 2 hr.)
3. **Streetcar:** Kochi Station or Harimayabashi → Venue hotel (Streetcar: 230 JPY (**cash only**)/one way, 15 min.):
 - Limousine bus: <https://www.kotoden.co.jp/publichtm/bus/limousine/index-en.html>
 - Highway bus: <https://www.yonkou-bus.co.jp/en/kochi.html>
 - Streetcar: (Kochieki mae →) Harimayabashi → Kochijo mae
(Please see the previous section for details.)

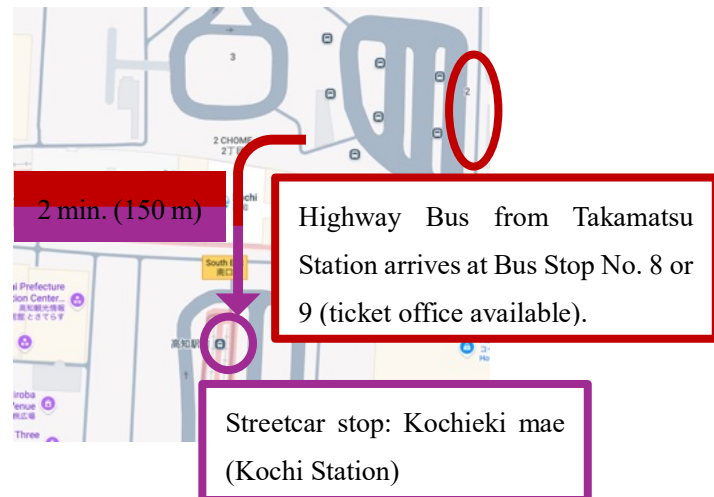
Map of Takamatsu Airport



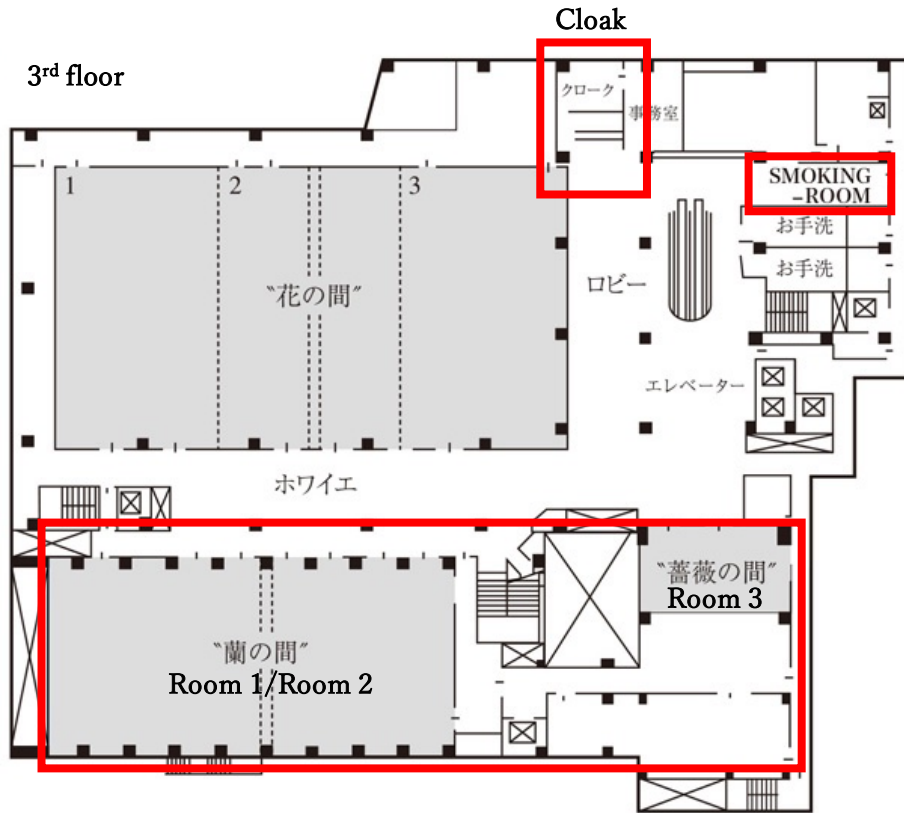
Map of Takamatsu Station



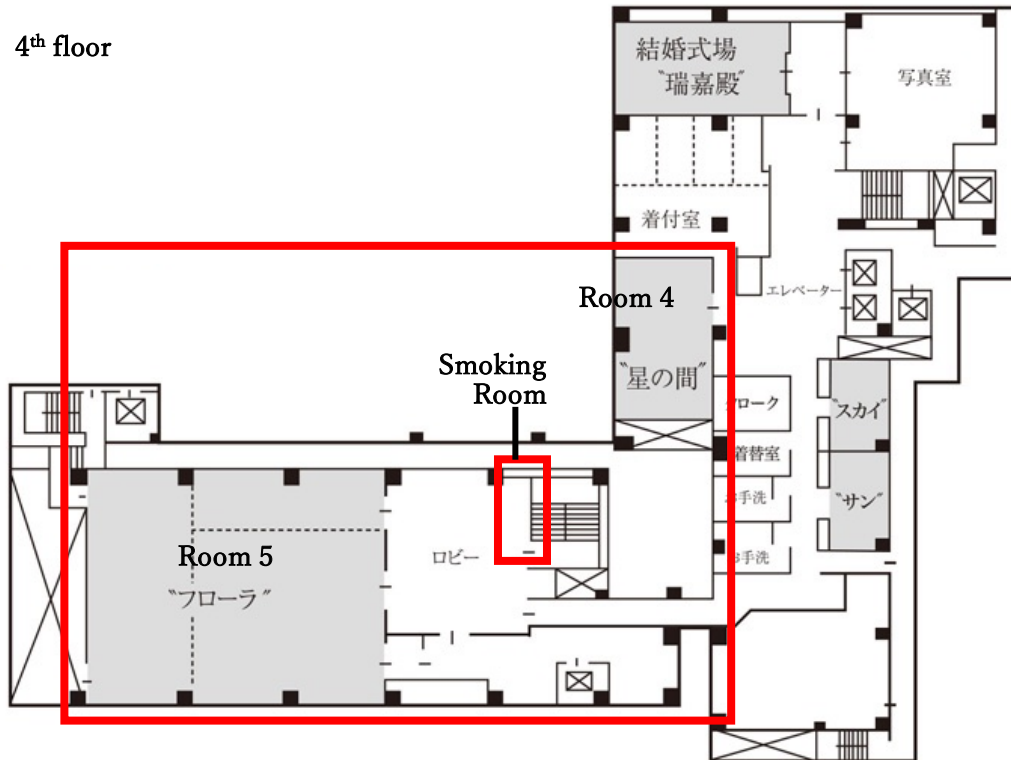
Map of Kochi Station



Floor map



4th floor



Rooms

Room 1/Room 2: Ran Hall (3F)



Room 3: Bara Hall (3F)



Room 4: Hoshi Hall (4F)



Room 5: Frola Hall (4F)



13. ORGANIZATION

Organized by:

The Organizing Committee of the 33rd Japan-China-Korea Conference on Occupational Health and Safety

Supported by:

Department of Environmental Medicine, Kochi Medical School, Kochi University, Japan

Department of Digital Health, Kochi Medical School, Kochi University, Japan

14. ORGANIZING COMMITTEE

Chairperson:

Prof. SUGANUMA Narufumi (Kochi University, Japan)

Secretary-General:

Dr. EITOKU Masamitsu (Kochi University, Japan)

Steering Committee:

Dr. HIGASHI Toshiaki (Nishinohon Occupational Health Service Center, Japan)

Prof. MORIMOTO Yasuo (University of Occupational and Environmental Health, Japan)

Prof. EBARA Takeshi (University of Occupational and Environmental Health, Japan)

Dr. YOSHIKAWA Toru (National Institute of Occupational Safety and Health, Japan (JNIOSH), Japan)

Dr. MORIGUCHI Jiro (Kyoto Industrial Health Association, Japan)

Operation Team:

Dr. TAMURA Taro (Kochi University, Japan)

Dr. YAMASAKI Keiko (Kochi University, Japan)

Mr. NOMURA Yoshua Kazukuni (Kochi University, Japan)

Contact to executive secretariat: 33jck_ohs@kochi-u.ac.jp